

CAMPUS LIVING 101

Live Like a Saint

Welcome to Maryville University! We are excited that you chose to live on campus. The Residential Life program at Maryville strives to meet the differing needs of a changing student population. All students living in university housing can expect a high-quality residential program that provides a fun, supportive, and challenging environment where every student can live, learn, and develop academic and social skills.

This year on our campus, residents can expect numerous events ranging from social, get-to-know-you activities, to programs and services designed to help students become more successful in and out of the classroom. We hope you find this information helpful when preparing for your move. Please contact us with any questions at reslife@maryville.edu.

We look forward to seeing you on opening day!

GENERAL INFORMATION

ETHERNET & CABLE

Wireless Internet

All common areas in the residence halls and the entire apartment complex are wireless.

Cable

Each room has a cable TV jack with an extended basic cable package provided.

Students need to bring their own coaxial cable to connect to the TV. Purchase only the type with screw on connectors. Other connectors will allow too much signal degradation.



PARKING

ANY STUDENT BRINGING A CAR TO CAMPUS IS REQUIRED TO HAVE A PARKING PERMIT. FORMS CAN BE COMPLETED BY VISITING THE PUBLIC SAFETY OFFICE OR ONLINE AT WWW.MARYVILLE.EDU/PUBLICSAFETY.

PUBLIC SAFETY— 314.529.9500

NEED TO KNOW

Any damage to the room (e.g. mattress stains, paint chips caused by nailing/tape, carpet stains, etc.) will result in charges to the student's account upon check-out.



MARYVILLE UNIVERSITY IS A SMOKE FREE CAMPUS. Smoking can only be done inside vehicles.



All students are required to have the minimum meal plan according to their housing.



Mail Pick-up for all residents:
All mail and packages should be picked up at the Mailing Center, located inside the M Store. Students must present their I.D. card when picking up their mail.

Residential Life Contact Information

OFFICE LOCATION

Lobby of Potter Hall & Saints Hall.

ADDRESS

650 Maryville University Dr.
St. Louis, MO 63141

OFFICE HOURS

Monday- Friday
8am-4:30pm

website: <https://www.maryville.edu/studentlife/campus-life/residential-life/>

DECORATING 411

IF STUDENTS WISH TO BRING CARPETING/RUGS FOR THEIR ROOM, THE FOLLOWING MEASUREMENTS MAY ASSIST YOU IN THE PURCHASING PROCESS:

POTTER HALL HAS VARIOUS SIZES, PLEASE SEE THE DIFFERENT LAYOUTS LISTED LATER OR EMAIL RESLIFE FOR INFORMATION ON YOUR ROOM'S DIMENSIONS. THE HOTELS WILL ALSO HAVE A VARIETY OF SIZES, EMAIL FOR MORE INFORMATION.

ALL MEASUREMENTS ARE GENEROUS TO ALLOW FOR ROOM MEASUREMENT VARIATIONS AND CUTTING.

PLEASE NOTE: ALL RESIDENTIAL SPACES ARE ALREADY CARPETED AND HAVE WINDOW COVERINGS. YOU ARE WELCOME TO BRING RUGS AND CURTAINS, WE JUST ENCOURAGE THAT YOU HANG CURTAINS WITH A TENSION ROD.

THOSE WITH ROOMMATES MAY WANT TO TALK PRIOR TO MOVE-IN TO ELIMINATE DUPLICATING ITEMS IN THE ROOM.

STUDENTS ARE NOT ALLOWED TO USE NAILS, SCREWS, OR DRILL INTO THE WALLS.

PLEASE NOTE: RESIDENTIAL LIFE STRONGLY DISCOURAGES THE USE OF 3M ADHESIVE PRODUCTS IN LIVING SPACES. YOU ARE RESPONSIBLE FOR ANY DAMAGE CAUSED BY THE USE OF THESE PRODUCTS

Being Prepared with COVID-19

All residential Students are expected to clean and maintain their own living spaces, including bathrooms and shared spaces such as kitchens, after moving in. Residential students should review Centers for Disease Control and Prevention (CDC) guidance, including such things as regular handwashing and the use of disinfectant wipes or spray on bathroom surfaces before and after use.

What to bring (medical related):

- Thermometer
- Over the counter pain reliever (such as Acetaminophen, Ibuprofen or Paracetamol)
- Ice packs (reusable/disposable)
- Common cold medications
- Common first aid medications
- Insect repellent
- Sunscreen
- Nail clippers
- tweezers
- safety pins
- non-latex gloves
- face-mask (washable)
- disinfectant wipes
- hand soap

TO STAY UP-TO-DATE ON ALL PROCEDURES AND PROTOCOLS RELATED TO COVID-19, CHECK OUT OUR SAINTS STRONG WEBSITE: MARYVILLE.EDU/SAINTSSTRONG.

WHAT SHOULD I BRING?

- Desk lamp(s)
- Floor lamp(s) for Potter Hall and hotels as there is no overhead lighting
- Small refrigerator (max. 4.5 cu. ft.)
- Microwave (max. 700 watt)
- TV/DVD player
- Personal computer
- Clothing for all seasons
- Umbrella
- Posters/wall decorations
- Portable Speaker
- Small tool kit
- Power strips with circuit breaker (2)
- Alarm Clock
- Laundry facilities are free to use, but students must provide their own soap and other needed laundry items
- Dry-erase/Memo board
- Waste paper baskets
- Linens and towels
- Bed sheets and mattress cover
 - Students will be charged for stains or damages to mattress at check-out
- Tension rods for curtains (not applicable for Potter or Saints)
- Cups, bowls, plates, flatware, dish soap
- Personal care items (soaps, shampoo, etc.) and a shower caddy
- Backpack
- Bathrobe
- Flashlight
- Snacks
- Medical related items listed above.



WHAT SHOULD I LEAVE @ HOME?

- CANDLES AND/OR INCENSE
- Burning candles and incense is not allowed.
- Pets—you can ONLY have fish in an aquarium (10 gal. max.)
- Water-filled furniture
- Fireworks/fuel
- Open heat source appliances (toasters, toaster ovens, etc.)
- Halogen lamps
- Firearms, hunting equipment (bows, knives, etc.)
- Extension cords are not allowed

APARTMENTS

What additional items should we bring that is not needed in the residential halls?

- Cleaning supplies
- Dishwasher detergent
- Vacuum cleaners
- Dishes, pots, pans, utensils
- Dish towels, hot pads
- TV Stand/entertainment center

Potter Hall Facts

POTTER HALL IS A CO-ED FACILITY HOUSING 240 STUDENTS AND HAS A PRIVATE BATHROOM IN EACH ROOM. MALE AND FEMALE STUDENTS LIVE NEXT TO ONE ANOTHER. ROOM OPTIONS IN POTTER HALL INCLUDE DOUBLES AND TRIPLES.

ACCOMMODATIONS IN POTTER HALL INCLUDE:

- Spacious lobby with two study areas
- Lounges and study areas on each floor
- Free laundry facilities
- Beverage and snack station (free Coffee, tea, and water)
- Fitness center
- Backyard patio
- Residential Life Office

THE STYLE OF ROOM AND DIMENSIONS VARY:

- Layout A: 13'x18'
- Layout B: 13'x15'
- Layout C: 13'x17' and 13'x10'-6"
- Layout D: 13'x23'

FURNISHINGS PROVIDED BY THE UNIVERSITY INCLUDE:

- Twin- XL sized beds with built-in drawers and night stands (beds are not made to be lofted)
- Desks and desk chairs
- Closet and wardrobe

THE MARYVILLE DIGITAL ID WILL BE USED AS THE STUDENT'S KEY IN POTTER HALL

Saints Hall Facts

SAINTS HALL IS OUR NEWEST RESIDENTIAL FACILITY AND OFFERS SUITE-STYLE LIVING. TWO DOUBLE OCCUPANCY ROOMS ARE JOINED BY A SPACIOUS BATHROOM.

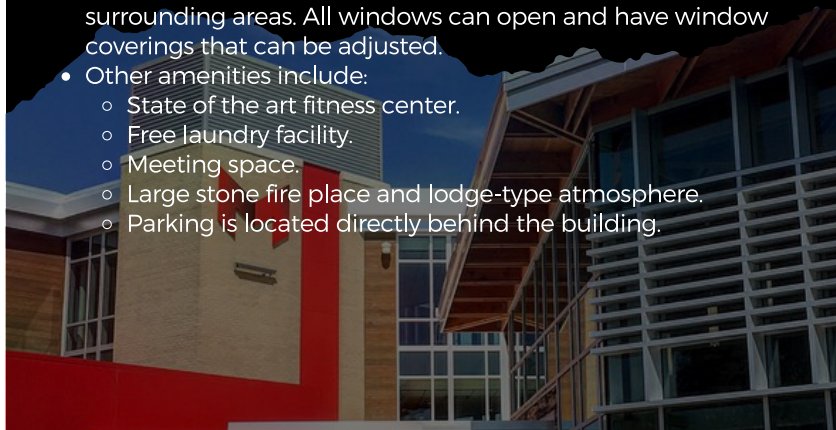
Saints Hall offers four floors of living space and lounge space.

- Modern furniture and loftable beds with whiteboards attached fill each room along with desks, chairs, and a set of drawers.
- Large windows offer spectacular views of campus and surrounding areas. All windows can open and have window coverings that can be adjusted.
- Other amenities include:
 - State of the art fitness center.
 - Free laundry facility.
 - Meeting space.
 - Large stone fire place and lodge-type atmosphere.
 - Parking is located directly behind the building.

"Expanding the residential community reflects the strategic growth of our student body. The addition of Saints Hall will elevate the level of energy, excitement, and engagement of students across campus, while promoting our value of being student-centered."

Nina Caldwell

Edd, VP for Student Life



HOTEL LIVING

Marriott West Hotel Facts

MARRIOTT WEST WILL BE ONE OF OUR HOTEL OPTIONS FOR STUDENTS THIS YEAR, PROVIDING A SINGLE ROOM AND PRIVATE BATHROOM TO THOSE THAT RESIDE THERE.



Students will be housed on the 2nd, 3rd, 4th, and 5th floors of the hotel. With a Resident Assistant present on each floor.

- Rooms will come completely furnished with a bed size of either a king or 2 queen beds (reach out at reslife@maryville.edu for the exact size in your room).
- Other amenities* include:
 - Fitness center
 - Free laundry facility.
 - Indoor/outdoor pools
 - Restaurant
 - Parking (Open parking or parking garage)
 - Trash pick up
 - Shuttle service available to campus (shuttle schedule will be sent to hotel residents).
- All hotel services (room service/food) will come at an charge to students that utilize them.

Drury Plaza Hotel Facts



DRURY PLAZA WILL BE ONE OF OUR HOTEL OPTIONS FOR STUDENTS THIS YEAR, PROVIDING A SINGLE ROOM AND PRIVATE BATHROOM TO THOSE THAT RESIDE THERE.

Students will be housed on the 3rd, 4th, 5th, 6th, 7th, & 8th floors of the hotel. With a Resident Assistant present on each floor.

- Rooms will come completely furnished with a bed size of either a king or 2 queen beds (reach out at reslife@maryville.edu for the exact size in your room).
- Other amenities* include:
 - Fitness center
 - Free laundry facility.
 - Indoor/outdoor pool
 - Free breakfast and 5:30 Kickback food service is included in the rate for Maryville students.
 - Open Parking (vehicle must be registered and limited to one vehicle per student)
 - Trash pick up
 - Shuttle service available to campus (shuttle schedule will be sent to hotel residents).
- All hotel services (room service/food) will come at an charge to students that utilize them.

Hotel key card will be used for students to enter their rooms.

**All amenities available to hotel residents are subject to change based off the guidelines issued by the CDC. For updates visit maryville.edu/saintsstrong.*

HILLTOP APARTMENT FACTS

The apartments are fully-furnished with bedroom and living room furniture. Kitchen appliances include a garbage disposal, dishwasher, stove/oven, and a built-in microwave. Free laundry service is available on the lower level of each building. Every apartment has a private backyard patio equipped with a picnic table and grill.

Each apartment resident gains access to the exterior door of their apartment using an assigned Maryville OneCard; students receive separate bedroom keys.

The Buder Family Student Commons Building is located near the apartments. This is a great place for students to meet, study, and attend a number of events and programs held in the building throughout the year.



Q & A'S

HOW MANY APARTMENTS ARE THERE?

There are five apartment buildings each that house 50 students. Each building has five 2 bedroom/2 bath units and ten 4 bedroom/2 bath units.

WHAT ARE THE ROOM DIMENSIONS?

Dimensions differ slightly from the two bedroom and four bedroom units. A good approximation for each area is listed: Bedrooms 9'x10' Living room 12'x14' Kitchen 8'x11' Bathrooms 6'8'

IS THE APARTMENT CARPETED?

All areas are carpeted except for the kitchen and bathrooms, which have vinyl flooring.

WHAT APPLIANCES ARE INCLUDED?

All major appliances are provided: stove, microwave, refrigerator, dishwasher, and disposal. Additional refrigerators and/or freezers are not allowed.

CAN WE HAVE PATIO FURNITURE?

Yes, if it's specifically for the outdoors. **NO COUCHES OR UPHOLSTERED CHAIRS ARE ALLOWED.**

Q & A'S CONTINUED

WHAT OTHER FIXTURES ARE IMPORTANT TO KNOW ABOUT?

- Separate heating/ AC units per apartment.
- Window blinds
- Egg shell colored walls
- Multicolor carpet
- Tub shower combos in each bathroom



IS THE APARTMENT FURNISHED OR UNFURNISHED?

All apartments are furnished. Each bedroom has a bed, a mattress, a dresser, a desk, and a desk chair. Each living room has two kitchen chairs, a sofa and matching arm chair, coffee table, and end table. Shower curtains are NOT provided.

DO WE NEED TO SET UP PHONE OR CABLE?

No, the following services are provided as part of university charges:

- Cable and internet in each bedroom and the living room
- No landline phone services are available on campus
- Water, electricity, gas, sewer, and trash removal are also included in the pricing structure

CAN YOU BRING A GRILL AND BBQ?

Due to fire code and storage regulations, students are not allowed to bring a grill. Grills and tables are provided by the university on the patio behind each building.

DO I HAVE TO HAVE A MEAL PLAN?

All resident students are required to carry a meal plan; because apartment students have access to a kitchen, we allow these residents to have much smaller meal plans than those living in our residence halls.

WE CAN'T WAIT TO HAVE YOU BACK WITH US THIS FALL!

If you have any more questions, feel free to reach out to us via email: reslife@maryville.edu

Connect with us! @reslifemu

